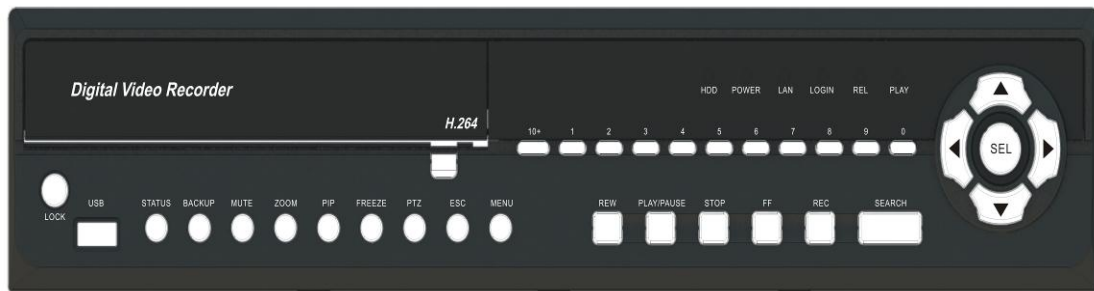


# 4CH DVR

## Quick Start Guide



<b>1. Packing.....</b>	<b>P.2</b>
<b>2. Hard Disk Installation.....</b>	<b>P.3</b>
<b>3. DVD-RW Installation.....</b>	<b>P.5</b>
<b>4. Front Panel Controls.....</b>	<b>P.7</b>
<b>5. Rear Panel Connectors.....</b>	<b>P.9</b>

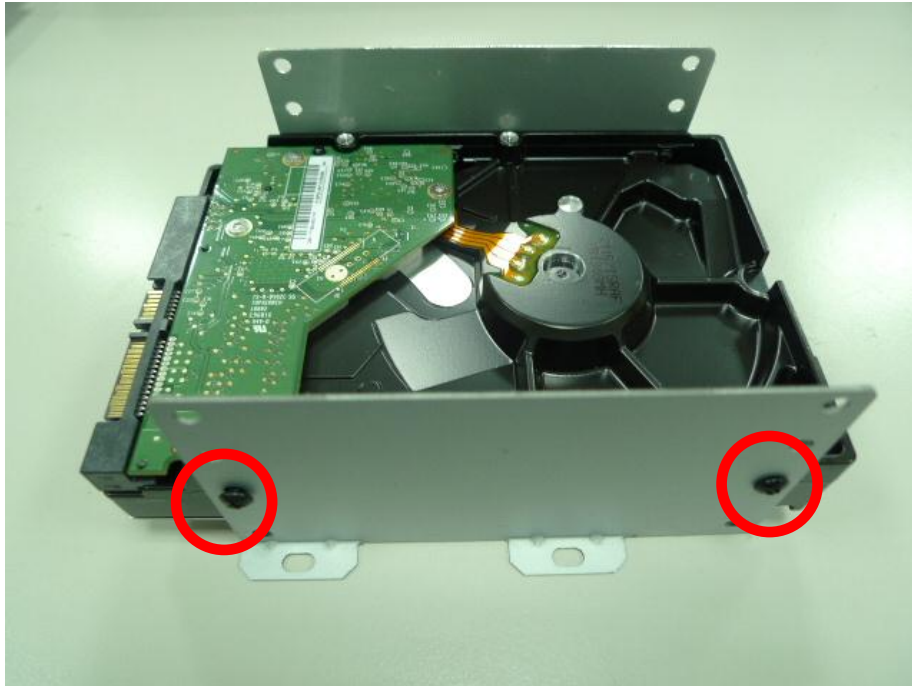
- 1. DVR**
- 2. Quick Start**
- 3. IR Remote Control** \*Pressed "DVR1" Button before use
- 4. Battery**
- 5. CD**
- 6. Hard Disk Mount**
- 7. Screws**
- 8. IDE to SATA Power Cord**
- 9. Power Cord**
- 10. SATA Cord**

Note: Standard shipping products do not include HDD

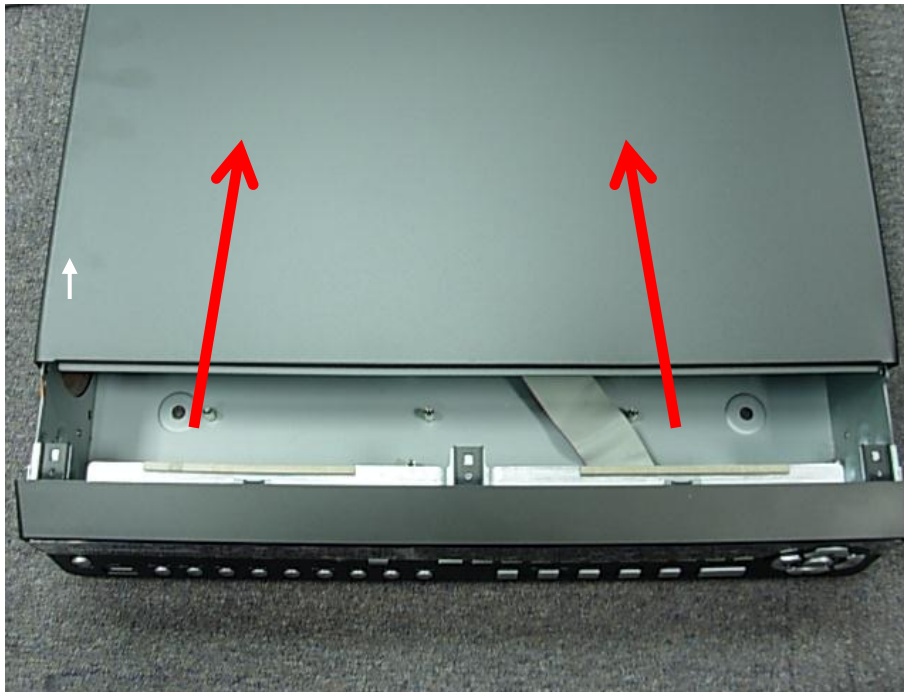
# 2

## HARD DISK INSTALATION

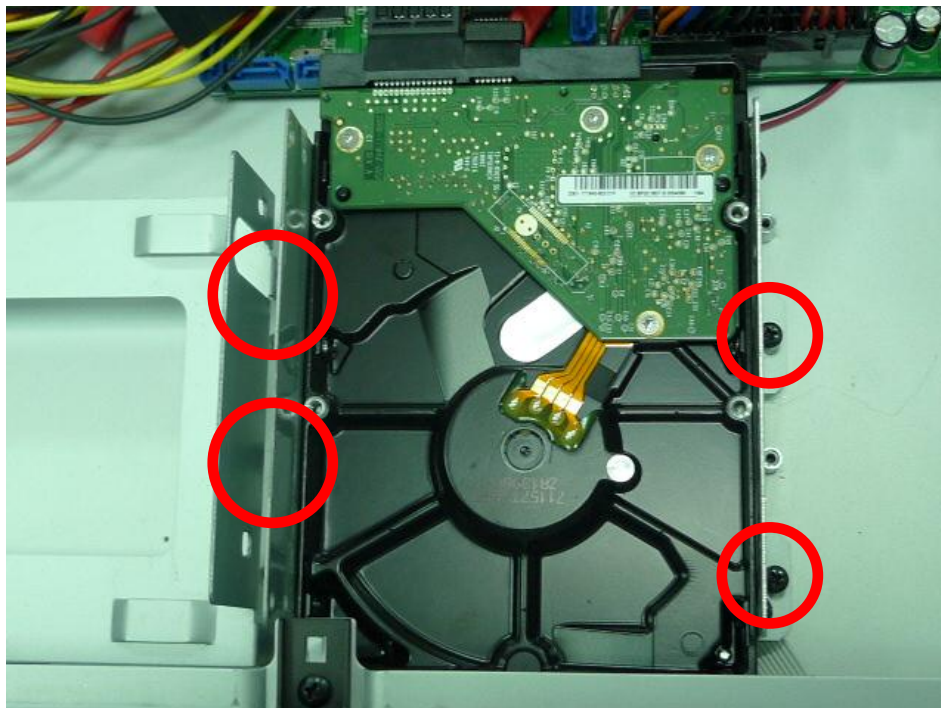
Step 1) Fix the HDD to rack mount with the screws as indicated.



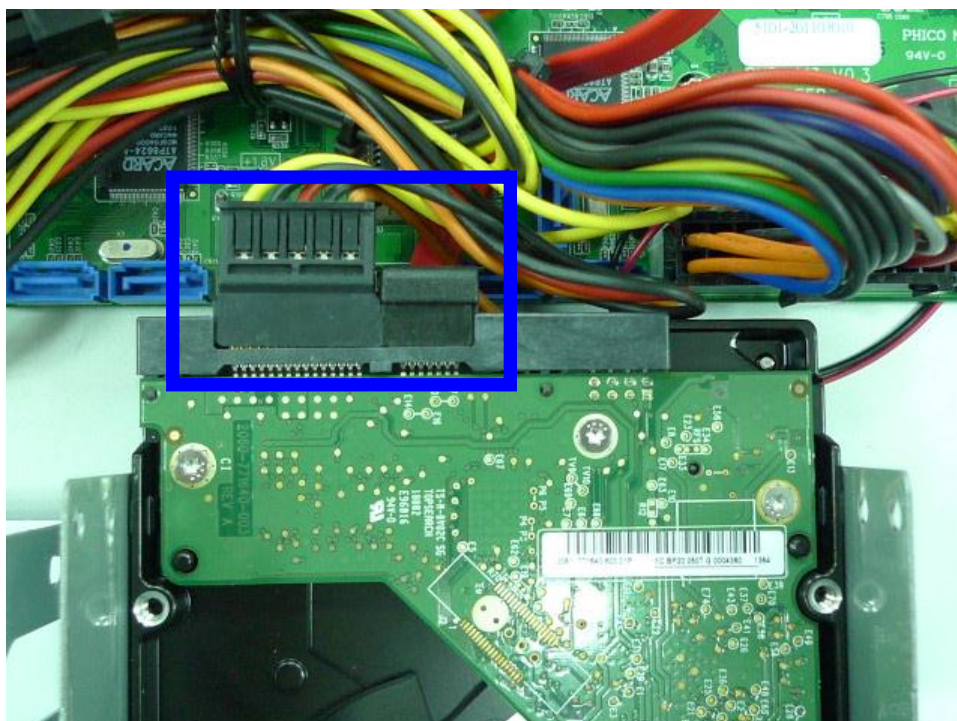
Step 2) Remove all screws and remove the machine cover in accordance with the direction of the arrow.



**Step 3) Place the HDD on the HDD plate and screw it as indicated.**



**Step 4) Connect the power and the SATA cables as indicated.**

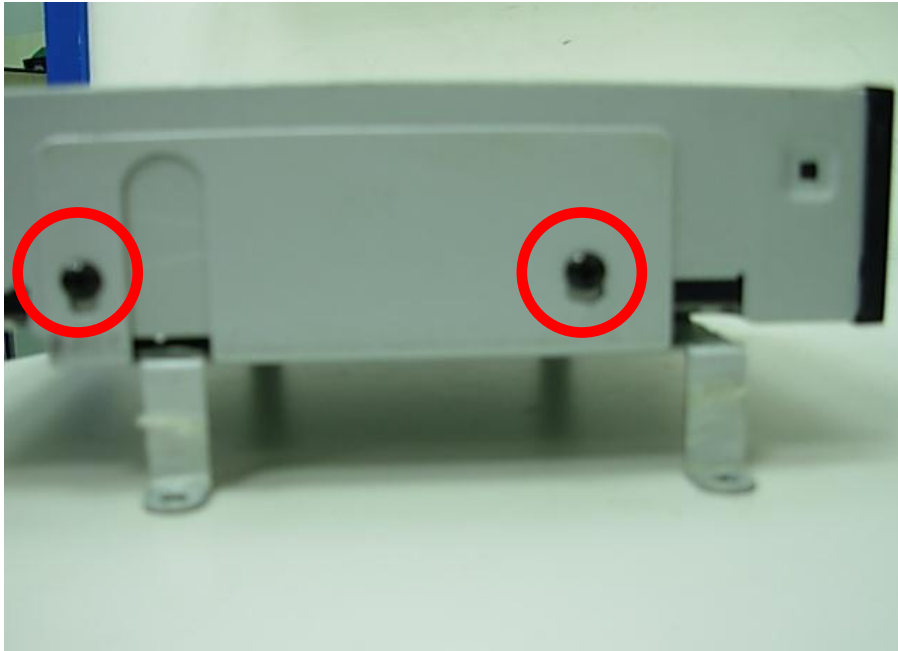


**Note:** After installation, please initialize Hard Disk before starting to record. For more detailed information, please check out User Manual "Storage Setup" for reference.

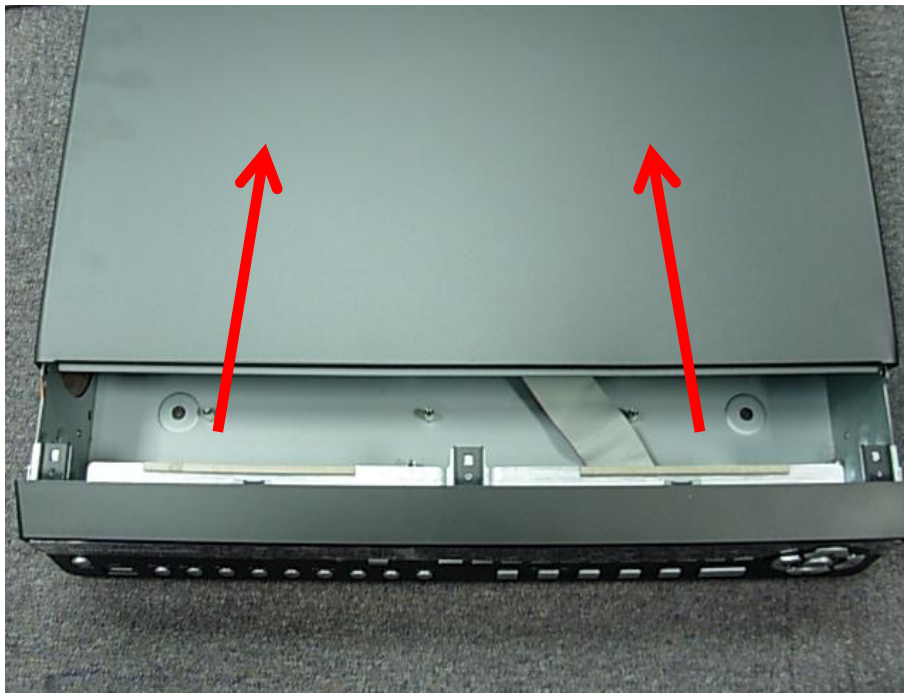
### *DVD-RW Installation*

*(Standard shipping products do not include HDD and DVD-RW)*

Step 1) Fix the DVD-RW to rack mount with the screws as indicated

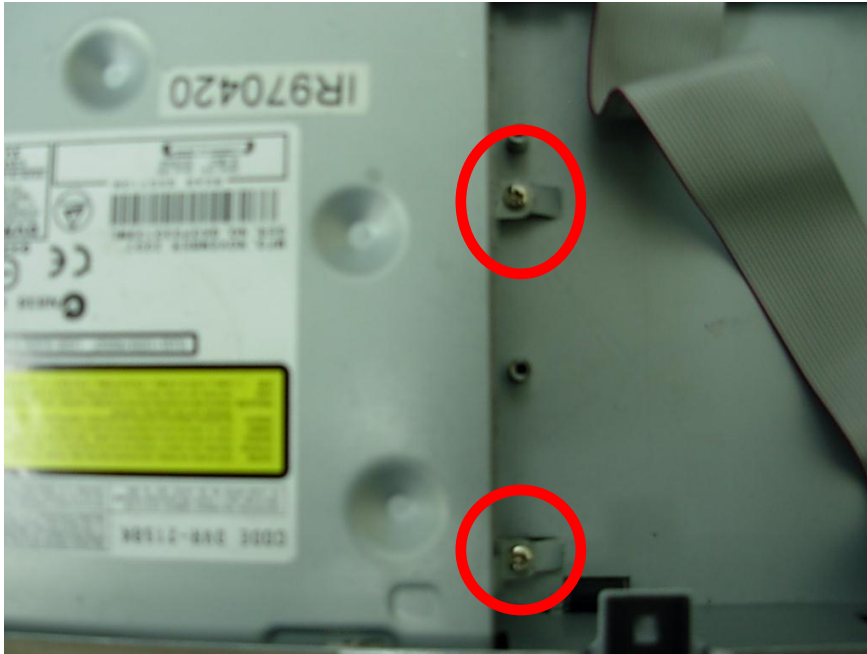


Step 2) Remove all screws and remove the machine cover in accordance with the direction of the arrow.

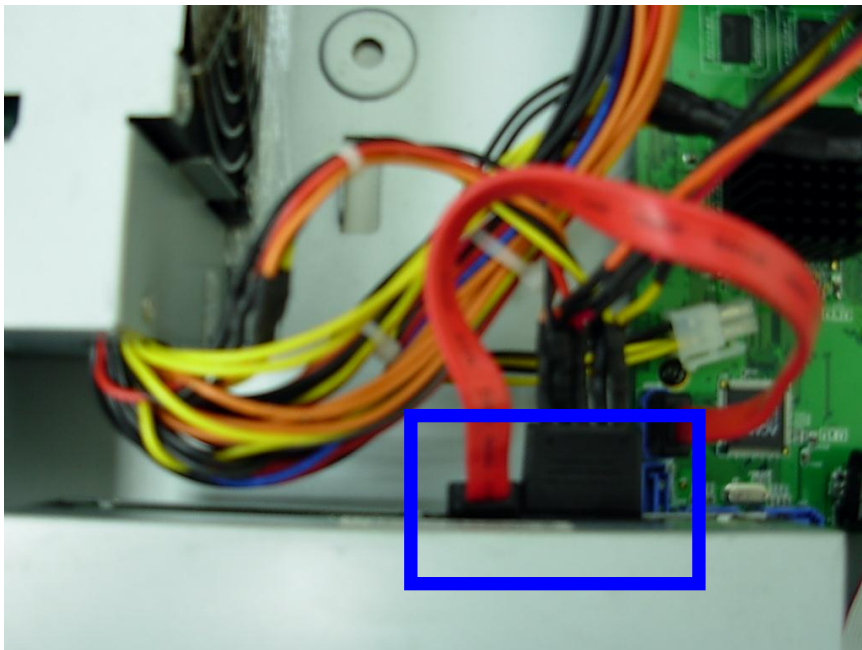




**Step 3) Fix the DVD-RW rack mount with the screws into to housing as indicated**

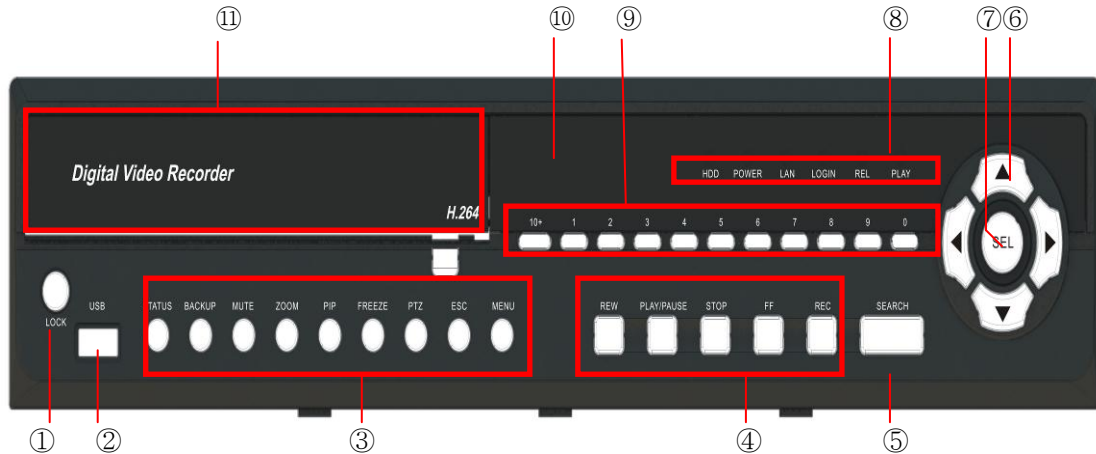


**Step 4) Connect the power and the SATA cables as indicated.**



# 4

## FRONT PANEL CONTROLS



① LOCK	On / Off Key Lock in live mode.
② USB 2.0	USB port
③ STATUS	In live mode, enter the System Information menu
③ BACKUP	In LIVE mode, press to display the BACKUP menu.
③ MUTE	In LIVE mode, enable/ disable live audio
③ ZOOM	In LIVE mode, enlarge the display of a channel.
③ PIP	In LIVE mode, display with picture in picture format.
③ FREEZE	In LIVE mode, display can be FREEZE.
③ PTZ	Display PTZ Menu.
③ ESC	In SETUP mode, Exit / Return to previous setup menu
③ MENU	In LIVE mode, press to display menu.
④ REW	In PLAYBACK mode, press to play rewind 4x, 8x, 16x, 32x
④ PLAY / PAUSE	In PLAYBACK mode, pause / resume playback
④ STOP	In PLAYBACK mode, stop playback
④ FF	In PLAYBACK mode, press to play forwards 4x, 8x, 16x, 32x
④ REC	Start or stop recording.
⑤ SEARCH	In LIVE mode, press to display time search menu.
⑥ Arrow keys	In SETUP mode, move the cursor up / down, reduce / increase the value of key. °
⑦ SEL	In SETUP mode, press to enter sub-menu
⑧ LED Display (From left to right)	HDD : Hard disk drive Power : Power is on LAN : Network connected LOGIN : User login REC : Recording

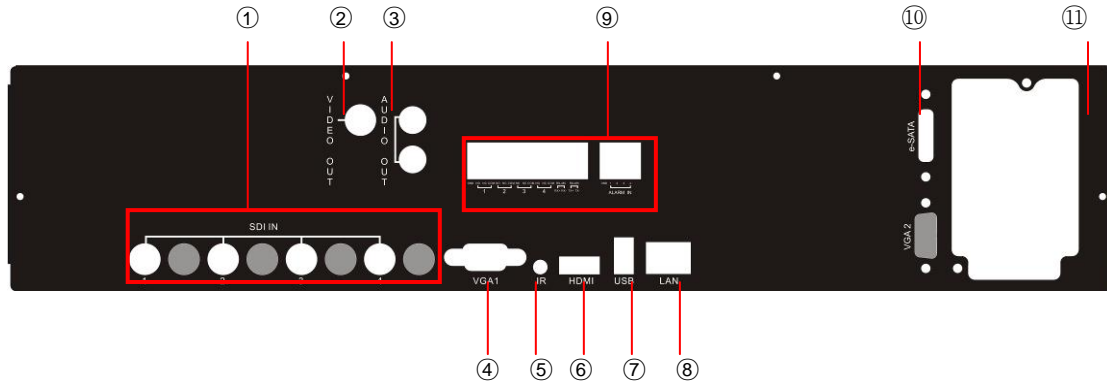
	PLAY : DVR play video
⑨ Number 0~9 、 10+	Select the full screen channel in live mode. Select the full screen channel in playback.
⑩ IR Sensor	Input sensor for the remote control
⑪ DVD Writer	Optional DVD-RW backup device. (Option)



# 5

## REAR PANEL CONNECTORS

### Rear Panel



① SDI IN	SDI input port for HD camera, 4 in total.
② VIDEO OUT	BNC output port for second monitor
③ AUDIO OUT	RCA output port for audio sign, 2 in total.
④ VGA	VGA port.
⑤ IR	IR extension cable jack.
⑥ HDMI	HDMI port
⑦ USB	USB port
⑧ LAN	Network port.
⑨ EXTERNAL I/O	EXTERNAL I/O port, left and right are two groups, see the following table function
⑩ eSATA	External SATA hard disks port for expanding recording space. (depends on model)
⑪ AC 110/220V	Socket for an AC 110/220V input. <b>Caution: Switch to local voltage before use.</b>

